

# Assessment statistics for the academic year 2009-10

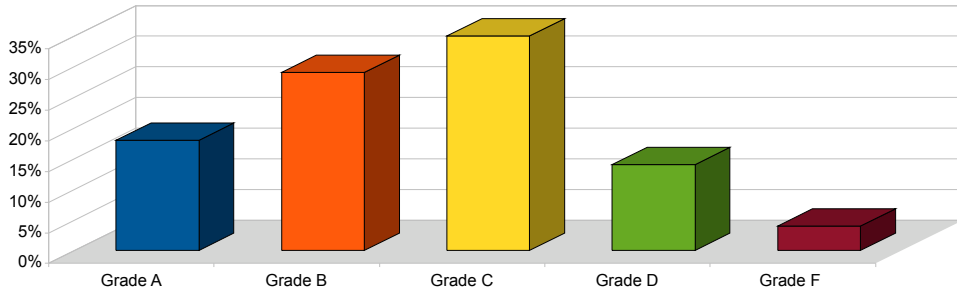


# Individual stats

**ASSESSMENT STATISTICS FOR THE ACADEMIC YEAR 2009-10**

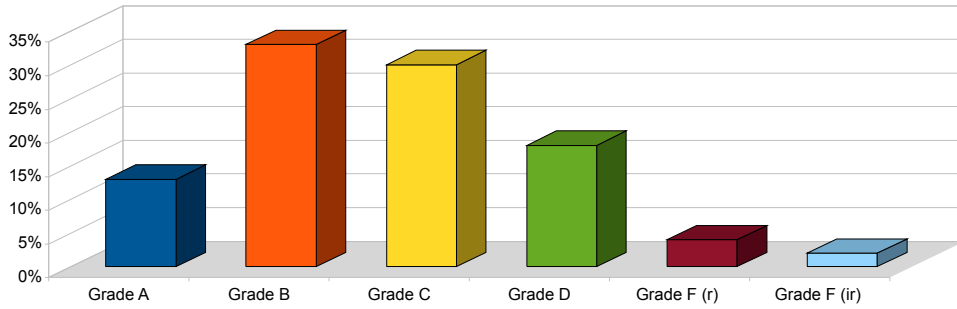
<b>August 2009</b>	<b>No.</b>	<b>Percentages</b>
Grade A	28	18%
Grade B	45	29%
Grade C	55	35%
Grade D	21	14%
Grade F (r)	6	4%

**Assessment Results**



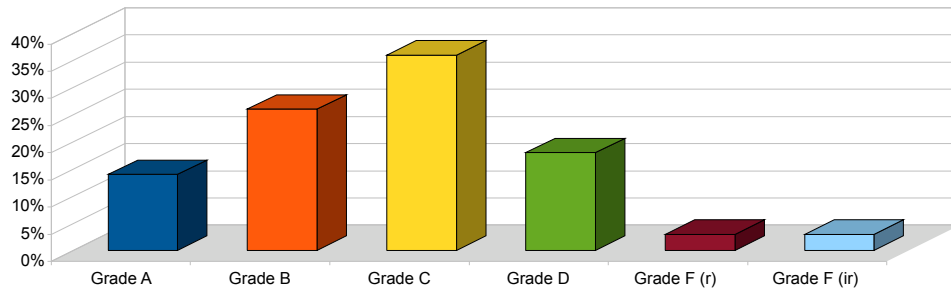
<b>November 2009</b>	<b>No.</b>	<b>Percentages</b>
Grade A	17	13%
Grade B	42	33%
Grade C	38	30%
Grade D	23	18%
Grade F (r)	5	4%
Grade F (ir)	2	2%

**Assessment Results**



<b>March 2010</b>	<b>No.</b>	<b>Percentages</b>
Grade A	18	14%
Grade B	34	26%
Grade C	48	36%
Grade D	24	18%
Grade F (r)	4	3%
Grade F (ir)	4	3%

Assessment Results



# **Stats for full academic year 09-10**

### Overall Stats

All Grades	Percentages	No.
Grade A	15%	63
Grade B	29%	121
Grade C	34%	141
Grade D	17%	68
Grade F (r)	4%	15
Grade F (ir)	1%	6

### Assessment Results

